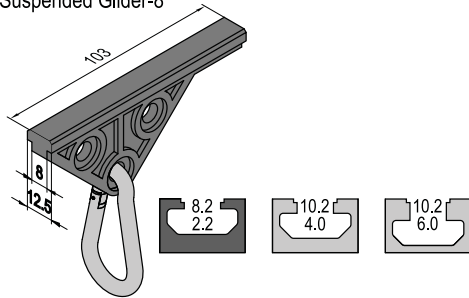


Suspended Glider

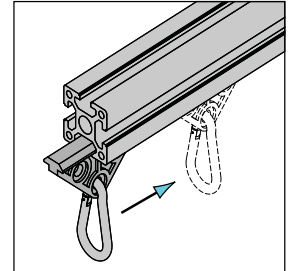
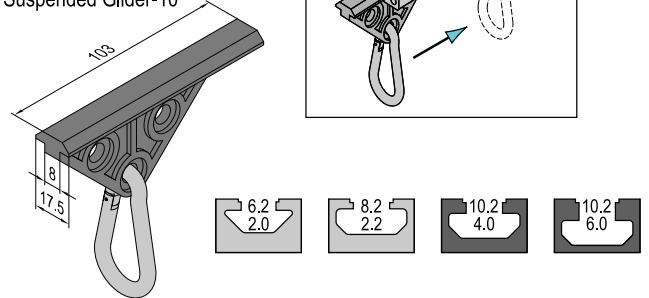
Element for tool suspension in profile slot.

Material and Color : glider - PA6+GF30, black
hook - zinc plated steel

Suspended Glider-8



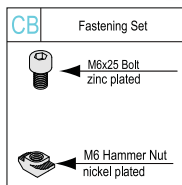
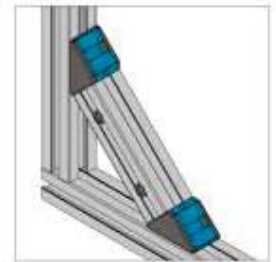
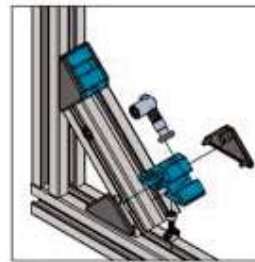
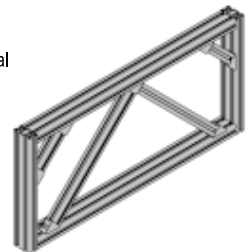
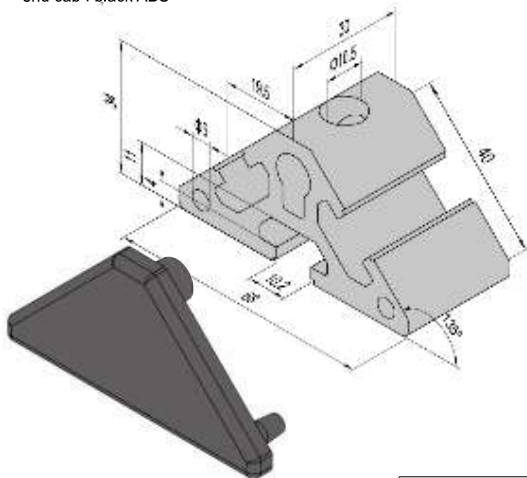
Suspended Glider-10



Description	Static Load (N)	Mass (g)	Part No.
Suspended Glider-8	200	48	8.sg
Suspended Glider-10	200	48	10.sg

Frame Joint

In the case of self-supporting lengths and dynamic alternating loads, bracing elements should be added due to the material combination of aluminium. These can be angle brackets, bracing plates and cross beams usually used in frameworks.
material: aluminium profile 6005-T5 clear anodized (cutting end not anodized)
end cap : black ABS



Description	Fastening Set	End Cap	Mass (g)	Part No.
Frame Joint (Set)	1xCB	2	95	10.fmj.4040